

**ALASKA DIVISION OF HOMELAND  
SECURITY & EMERGENCY MANAGEMENT  
SITUATION REPORT  
25-056 February 25, 2025**



Toll-Free 1.800.478.2337

Anchorage Area 907.428.7000

SEOC 907.428.7100

<p><b><u>SEOC Preparedness Level</u></b> Level 1-Routine Operations</p>	<p><a href="http://ready.alaska.gov">http://ready.alaska.gov</a></p>	<p><b><u>National Terrorism Advisory System:</u></b>  <a href="#">Read the NTAS Bulletin here</a></p>
<p><b><u>Maritime Security (MARSEC)</u></b> Level:1- Minimum Appropriate Security Measures</p>	<p><b>WHO Novel Coronavirus Pandemic (COVID-19):</b> <a href="#">2019 Novel Coronavirus</a></p>	<p><b><u>Alaska Military Installation Force Protection</u></b>  <b><u>Level:</u></b> FPCON Bravo</p>

(Significant changes from previous situation reports are red.)

**Significant Issues:**

**NONE**

**Department of Health (DOH):**

For current information, see: <https://health.alaska.gov/dph/Pages/default.aspx>  
<https://health.alaska.gov/dph/Emergency/Pages/prepared/default.aspx>

**NTAS Bulletin:**

The U.S. Department of Homeland Security issued an updated National Terrorism Advisory Bulletin on May 24, 2023. The current and expired bulletins can be viewed at the below link.  
<https://www.dhs.gov/national-terrorism-advisory-system>

**Travel Alerts and Conditions:**

For current driving conditions, dial 511 or visit: <https://511.alaska.gov/>

**Barry Arm Landslide / Tsunami Risk:**

For the latest information on the Barry Arm Landslide and Tsunami risk, click here:  
<https://diggs.alaska.gov/hazards/barry-arm-landslide.html>

**Earthquakes:**

United States Geological Service (USGS) Earthquake Information: <http://earthquake.usgs.gov/>  
National Tsunami Warning Center: <http://tsunami.gov/>

**Alaska Volcanoes:**

**Great Sitkin Alert Level: Watch** and Aviation Color Code: **Orange**  
**Mt. Spurr Alert Level: Advisory** and Aviation Color Code: **Yellow**  
**Atka Complex Alert Level: Advisory** and Aviation Color Code: **Yellow**  
For Alaska Volcano updates, go to: <https://www.avo.alaska.edu/>

## Air Quality Index (AQI) Advisories:

For the most up-to-date Air Quality Index Advisories:

<http://dec.alaska.gov/Applications/Air/airtoolsweb/Home/Index>

## Spills of Oil and Hazardous Substances:

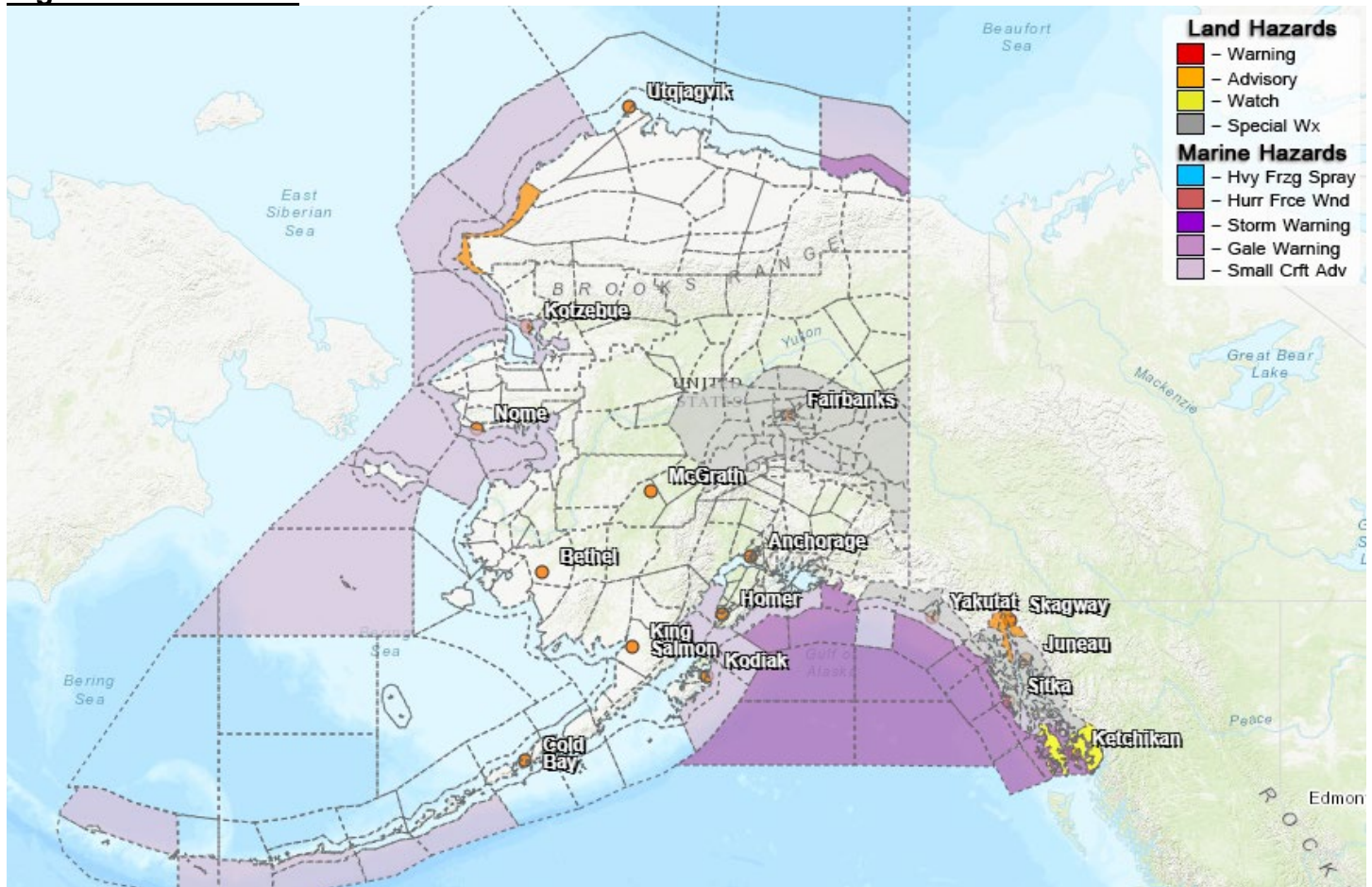
The Alaska Division of Environmental Conservation (ADEC) Spill Prevention and Response page is located at: <https://dec.alaska.gov/spar/>

## Alaska Cyber Security Information:

State Employees may sign up for cybersecurity notifications and alerts at:

<https://oit.alaska.gov/security>

## Significant Weather:



**Special Weather Statement: Warmer Temps 10 to 15 degrees above normal/above freezing**  
White Mountains and High Terrain South of the Yukon River; Fortymile Country; Upper Tanana Valley; Delta Junction; Upper Chena River Valley; Tanana Flats; Eielson AFB and Salcha; Goldstream Valley and Nenana Hills; Chatanika River Valley; Two Rivers; Fairbanks Metro Area; Nenana; Central Interior; Northern Denali Borough; Eastern Alaska Range North of Trims Camp

**Winter Weather Advisory: in effect until 9pm AKST this evening**

Western Arctic Coast

**High Wind Watch: Through Wednesday evening**

Prince of Wales Island; Ketchikan Gateway Borough; Annette Island

**Winter Weather Advisory: in effect until 3pm AKST this afternoon**

Haines Borough and Klukwan

**Winter weather Advisory and Winter Storm Watch: In effect through Wednesday evening**

Municipality of Skagway

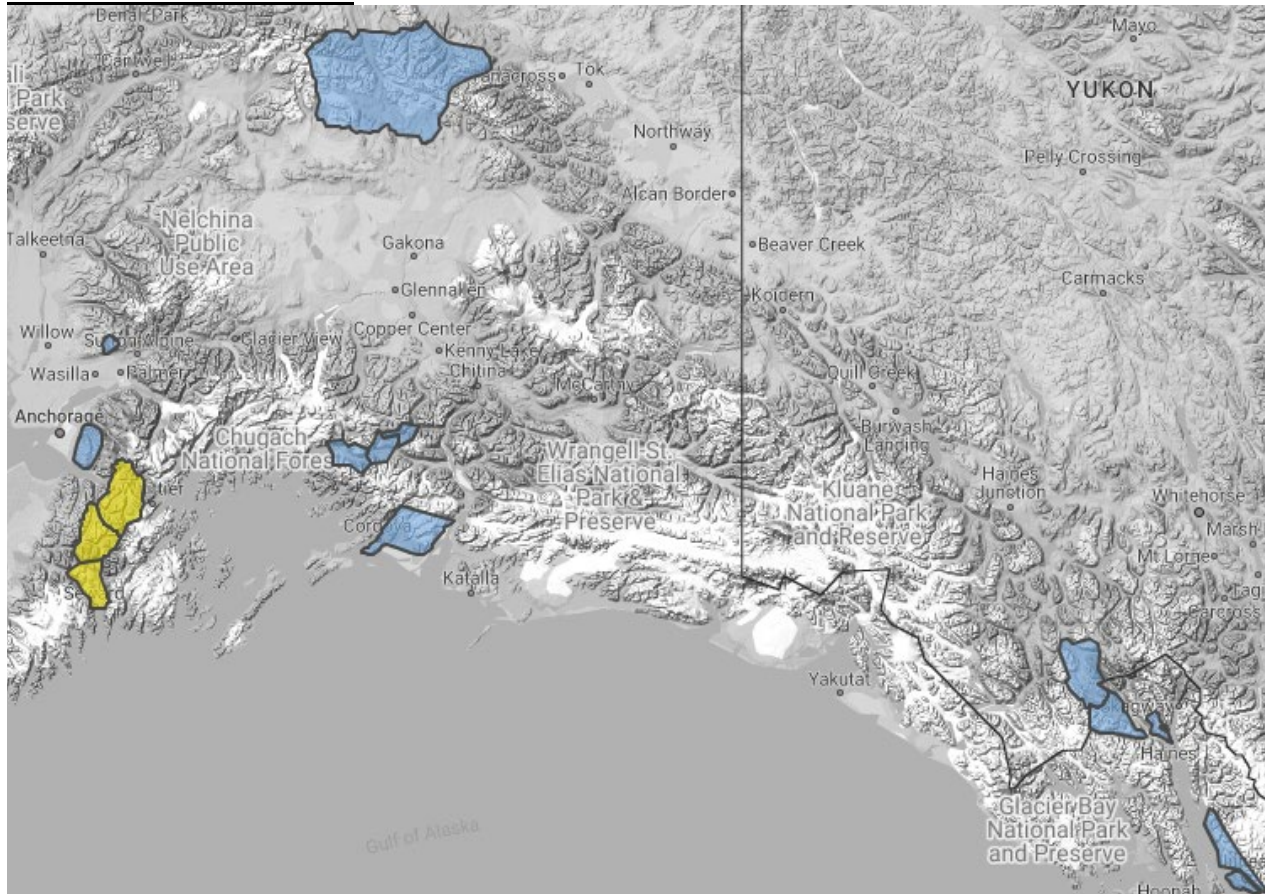
**Special Weather Statement: Heavy Rain and Strong Wind Late Tues into Weds**

City and Borough of Yakutat; Haines Borough and Klukwan; Glacier Bay; Eastern Chichagof Island; Cape Fairweather to Lisianski Strait; City and Borough of Sitka; Admiralty Island; City and Borough of Juneau; Petersburg Borough; Western Kupreanof and Kuiu Island; City and Borough of Wrangell

For more information and the most current weather, Watches / Warnings / Advisories go to:

<https://www.weather.gov/a/>

**Avalanche Conditions:**



**Summit Lake** – Low below 2,500', Moderate above 2,500'.

**Turnagain Pass** – Moderate below 2,500', Moderate 2,500'

**Seward and Lost Lake** – Low below 2,500', Moderate above 2,500'

**Valdez Maritime, Intermountain, and Continental** - Low below 3000' Moderate above 3000'

**Hatcher Pass** –Low at all levels.

For more information and the most current avalanche conditions, go to: <https://alaskasnow.org/>

**The Next Situation Report** will be on **February 26, 2025**. An interim report will be prompted by a significant change in the situation or the threat level. This report is posted on the internet at

<https://ready.alaska.gov/sitrep>.

**To register for email distribution, PLEASE go to:**

<http://list.state.ak.us/mailman/listinfo/dhsem.situation.report>.

Direct questions regarding this report to the SEOC at 907-428-7100 or [seoc@alaska.gov](mailto:seoc@alaska.gov).